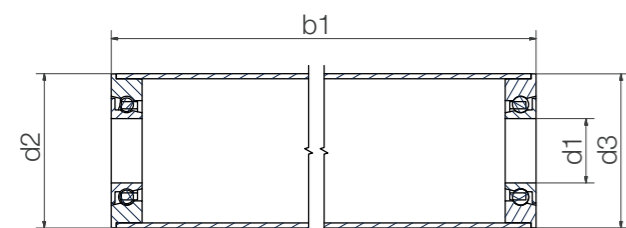




Aluminium tube with xirodur® B180 ball bearing

- Suitable for contact with food



Order key

Type	Material
------	----------

BBT-AC 38-6000-B180-10-ES

Ball bearing guide roller	Aluminium tube	Outer Ø	Dimensions according to DIN 625-1	Face material	Cage material	Ball material
---------------------------	----------------	---------	-----------------------------------	---------------	---------------	---------------

- Radial deep groove ball bearings with flange also available as individual parts** ▶Page 910
- Cage material**
10 = PA
30 = xirodur® B180
- Ball material**
ES = Stainless steel

Dimensions [mm]

Inner Ø d1	Outer Ø d2	Flange Ø d3	Length b1	Part No.
6	20	19.9	50–500	BBT-AC20-606-B180-30-ES New
8	20	19.9	50–500	BBT-AC20-688-B180-30-ES New
8	30	29.9	50–1,500	BBT-AC30-608-B180-10-ES
10	30	29.9	50–1,500	BBT-AC30-6000-B180-10-ES
12	30	29.9	50–1,500	BBT-AC30-6001-B180-10-ES
10	38	37.9	50–1,500	BBT-AC38-6000-B180-10-ES
12	38	37.9	50–1,500	BBT-AC38-6001-B180-10-ES
15	38	37.9	50–1,500	BBT-AC38-6002-B180-10-ES
17	38	37.9	50–1,500	BBT-AC38-6003-B180-10-ES
20	50	49.9	50–1,500	BBT-AC50-6004-B180-30-ES
20	60	59.9	50–1,500	BBT-AC60-6004-B180-30-ES



Online configurator for xiros® system solutions
▶ www.igus.eu/xirosAlu



Order example:
BBT-AC38-6000-B180-10-ES, L=500mm = Aluminium tube with 2 ball bearings with race material xirodur® B180, PA cage and stainless steel balls, total length 500mm

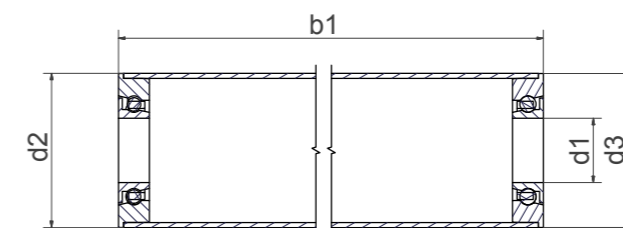


Available from stock



PVC tube with xirodur® B180 ball bearing

- Components for use in food in accordance with 10/2011/EU and 1935/2004/EG



Order key

Type	Material
------	----------

BBT-PVC 50-6004-B180-30-ES

Ball bearing guide roller	PVC tube	Outer Ø	Dimensions according to DIN 625-1	Face material	Cage material	Ball material
---------------------------	----------	---------	-----------------------------------	---------------	---------------	---------------

- Cage material**
30 = xirodur® B180
- Ball material**
ES = Stainless steel

Dimensions [mm]

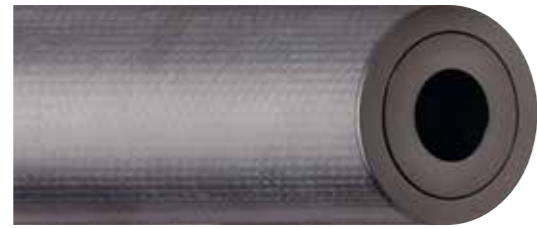
Inner Ø d1	Outer Ø d2	Flange Ø d3	Length b1	Part No.
8	30	30	50–1,000	BBT-PVC30-608-B180-30-ES
10	30	30	50–1,000	BBT-PVC30-6000-B180-30-ES
10	40	40	50–1,000	BBT-PVC40-6000-B180-30-ES
12	40	40	50–1,000	BBT-PVC40-6001-B180-30-ES
15	40	40	50–1,000	BBT-PVC40-6002-B180-30-ES
17	40	40	50–1,000	BBT-PVC40-6003-B180-30-ES
20	50	50	50–1,000	BBT-PVC50-6004-B180-30-ES
20	63	63	50–1,000	BBT-PVC63-6004-B180-30-ES



Order example:
BBT-PVC50-6004-B180-30-ES, L=200mm = PVC tube with 2 ball bearings with race material xirodur® B180, xirodur® B180 cage and stainless steel balls, total length 200mm



Available from stock



Carbon fibre tube with xirodur® S180 ball bearing, available as ESD version (with xirodur® F180 ball bearing)



Carbon fibre tube with xirodur® F180 ball bearing

Order key

Type Material

BBT-CF 50-6004-□-30-ES

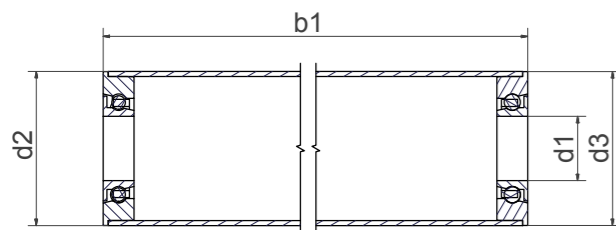
Ball bearing guide roller	Carbon fibre tube	Outer Ø	Dimensions according to DIN 625-1	Race material	Cage material	Ball material
---------------------------	-------------------	---------	-----------------------------------	---------------	----------------------	----------------------

Cage material

30 = xirodur® B180

Ball material

ES = Stainless steel



Dimensions [mm]

Inner Ø	Outer Ø	Flange Ø	Length	Part No.
d1	d2	d3	b1	
20	50	49.9	50–1,000	BBT-CF50-6004-S180-30-ES
20	100	100.0	50–1,000	BBT-CF100-6004-F180-30-ES



Order example:

BBT-CF50-6004-S180-30-ES, L=200mm = Carbon fibre tube with 2 ball bearings xirodur® S180, xirodur® B180 cage and stainless steel balls, total length 200mm



Delivery time: approximately 3 weeks

With xirodur® F180 as ESD version available upon request



Closed special solution with aluminium tube and polymer ball bearing for guide rollers and label rollers

Order key

Type Material

BBTG-AC 30-□-30-ES

Ball bearing guide roller	Aluminium tube	Outer Ø	Length – upon request	Cage material	Ball material
---------------------------	----------------	---------	-----------------------	----------------------	----------------------

Cage material

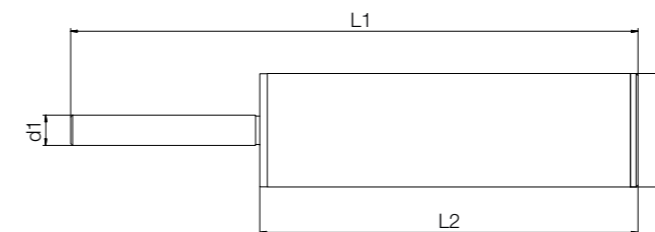
30 = xirodur® B180

Ball material

ES = Stainless steel



Ready-to-install complete systems with shaft to required size upon request



Dimensions [mm]

Outer Ø	Length	Part No.
d2	L1	
30	According to customer request	BBTG-AC30-XX-30-ES



Order example:

BBTG-AC30-200-30-ES, L=200mm = Aluminium with 2 ball bearings with race material xirodur® S180, xirodur® B180 cage and stainless steel balls, total length 200mm



Available upon request

upon request



PA cage,
stainless steel or
glass balls



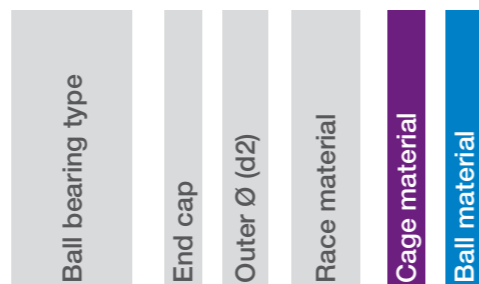
PA cage,
stainless steel balls
hexagon nut socket



Order key

Type Material

BB-6204EC44.5-B180-10-ES



Cage material

10 = PA

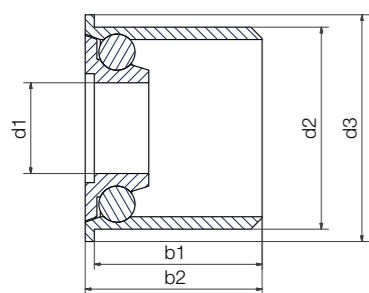
Options:

Ball material

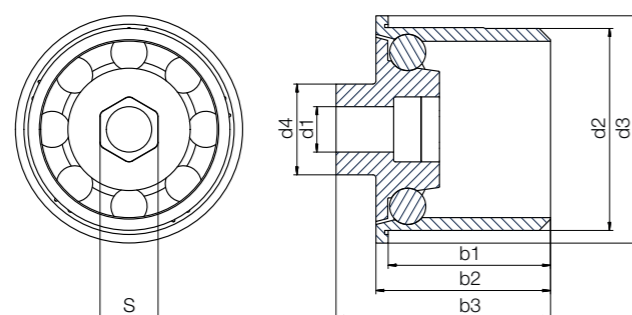
ES = Stainless steel

GL = Glass

Example "6204EC"



Example "6204ECM8"



Technical data

Installation size	Radial load capacity		Max. speed [rpm]	Weight	
	stat. [N]	dyn. [N]		PA/ES [g]	PA/GL [g]
6204	245	294	1,800	41.66	29.85
6204	245	294	1,800	48.44	-

Dimensions [mm]

Inner Ø d1	Outer Ø d2 d3		Width d4 b1 b2 b3	S	Cage/ball material combination		Part No.
	PA/ES	PA/GL					
20	44.5	50	- 35.8 38.5 -	-	● ●	BB-6204EC44.5-B180-10-□	
10	44.5	50	20 35.8 38.5 47.3	M8	● -	BB-6204ECM8-B180-10-ES	



Order example:

BB-6204EC44.5-B180-10-ES = End cap with race material xirodur® B180, with PA cage and stainless steel balls



Available
from stock

My sketches

