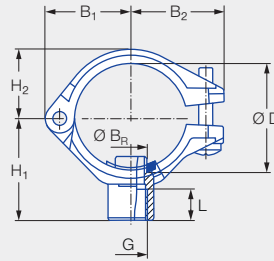


# Eyelet clamps with female thread



Eyelet clamps with female thread



For all nozzles with	Ordering no.						Screw (material)	Pipe Ø	Dimensions [mm]							Weight [g] (polyamide)		
	Type	Mat. no.			Code				B <sub>1</sub>	B <sub>2</sub>	B <sub>3</sub>	H <sub>1</sub>	H <sub>2</sub>	L	Ø B <sub>R</sub> <sup>1</sup>		Ø B <sup>2</sup>	Ø D
		51 Black	53 White	5E Blue	1/8 BSPP	1/4 BSPP												
Male thread 1/8 BSPP 1/4 BSPP	090.100	●	●	●	AB	AD	Stainless steel 316	3/8"	20.0	23.0	18.5	28.0	14.0	12.0	6.0	6.2–6.4	16.5–18.0	18.0
	090.110	●	●	●	AB	AD		1/2"	22.0	25.0	18.5	31.0	16.0	12.0	6.0	6.2–6.4	20.0–22.0	19.0
	090.120	●	●	●	AB	AD		3/4"	25.0	28.0	22.0	33.0	19.0	12.0	7.6	7.8–8.0	25.0–27.5	24.0
	090.130	●	●	●	AB	AD		1"	30.0	33.0	22.0	36.0	23.0	12.0	10.6	10.8–11.0	32.0–34.5	34.0
	090.140	●	●	●	AB	AD		1 1/4"	34.0	37.0	25.0	40.0	28.0	12.0	12.6	12.8–13.0	40.0–43.0	39.0

<sup>1</sup> Ø B<sub>R</sub> = spigot diameter.

<sup>2</sup> Ø B = recommended bore diameter.

Ordering Type + Material no. + Code = Ordering no.  
 example: 090.100 + 51 + AB = 090.100.51.AB