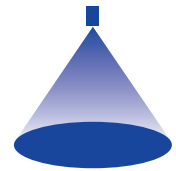


➤ Axiální trysky s rozstříkem plného kužele Series 490/491



Features:

- Extremely uniform liquid distribution
- Very stable spray angle
- Non clogging due to large free cross sections

Applications:

- Cleaning and washing processes
- Surface spraying
- Chemical process engineering
- Foam control

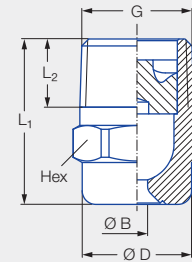


Figure 1

Series 490/491

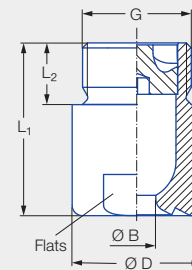


Figure 2

Code	Figure	G	Dimensions [mm]				Weight [g] (brass)
			L ₁	L ₂	Ø D	Hex/Flats	
CA	1	1/8 BSPT	18.0	6.5	10.0	11	13.0
CC	1	1/4 BSPT	22.0	10.0	13.0	14	16.0
CE	1	3/8 BSPT	24.5	10.0	16.0	17	30.0
CE	1	3/8 BSPT	30.0	10.0	16.0	17	50.0
CG	1	1/2 BSPT	32.5	13.0	21.0	22	60.0
CG	1	1/2 BSPT	43.5	13.0	21.0	22	85.0
AK	2	3/4 BSPP	42.0	15.0	32.0	27	190.0
AM	2	1 BSPP	56.0	17.0	40.0	36	350.0

Spray angle	Ordering no.								Bore diameter B [mm]	Narrowest free cross sections Ø [mm]	V̇ water [l/min]							Spray diameter D [mm] (at p = 2 bar)		
	Type	Mat. no.		Code							p [bar]							 H = 250 [mm] H = 500 [mm]		
		1Y	30	1/8 BSPT	1/4 BSPT	3/8 BSPT	1/2 BSPT	3/4 BSPP			1 BSPP	0.5	1.0	p [bar]						
		Stainless steel 316L	Brass											2.0	3.0	5.0	7.0	10.0		
45°	490.403	●	●	CA						1.25	1.25	0.57	0.76	1.00	1.18	1.44	1.65	1.90	200	400
	490.523	●	●	CA						1.70	1.70	1.15	1.52	2.00	2.35	2.89	3.30	3.81	200	410
	490.603	●	●		CC	CE¹				2.00	2.00	1.81	2.39	3.15	3.70	4.54	5.20	6.00	200	410
	490.643	●	●		CC	CE¹				2.45	2.45	2.30	3.03	4.00	4.70	5.77	6.60	7.61	200	410
	490.683		●			CE				2.55	2.55	2.87	3.79	5.00	5.88	7.21	8.25	9.52	210	410
	490.703		●			CE				2.65	2.65	3.22	4.24	5.60	6.59	8.08	9.24	10.66	210	420
	490.723	●	●			CE				2.85	2.85	3.62	4.77	6.30	7.41	9.09	10.40	11.99	210	420
	490.783		●				CG			3.45	3.45	5.17	6.82	9.00	10.58	12.98	14.85	17.13	210	430
	490.843		●				CG			3.80	3.80	7.18	9.47	12.50	14.70	18.03	20.63	23.80	220	430

¹ Only available in material 30.

Spray angle	Ordering no.								Bore diameter B [mm]	Narrowest free cross sections Ø [mm]	V̇ water [l/min]						Spray diameter D [mm] (at p = 2 bar)			
	Type	Mat. no.		Code							p [bar]						H = 250 [mm]	H = 500 [mm]		
		1Y	30	1/8 BSPT	1/4 BSPT	3/8 BSPT	1/2 BSPT	3/4 BSPT			1 BSPT	0.5	1.0	2.0	3.0	5.0			7.0	10.0
		Stainless steel 316L	Brass																	
60°	490.404	●	●	CA						1.15	1.15	0.57	0.76	1.00	1.18	1.44	1.65	1.90	260	520
	490.444	●		CA						1.25	1.25	0.72	0.95	1.25	1.47	1.80	2.06	2.38	260	520
	490.484	●	●	CA						1.45	1.45	0.92	1.21	1.60	1.88	2.31	2.64	3.05	260	520
	490.524	●	●	CA						1.60	1.60	1.15	1.52	2.00	2.35	2.89	3.30	3.81	270	530
	490.564	●	●	CA						1.80	1.80	1.44	1.89	2.50	2.94	3.61	4.13	4.76	270	530
	490.604	●	●	CA	CC	CE				2.05	2.05	1.81	2.39	3.15	3.70	4.54	5.20	6.00	270	540
	490.644	●	●		CC	CE				2.30	2.30	2.30	3.03	4.00	4.70	5.77	6.60	7.61	270	540
	490.684	●	●		CC	CE				2.60	2.60	2.87	3.79	5.00	5.88	7.21	8.25	9.52	280	550
	490.724	●	●		CC	CE				2.95	2.80	3.62	4.77	6.30	7.41	9.09	10.40	11.99	280	560
	490.764	●	●			CE				3.25	3.25	4.59	6.06	8.00	9.41	11.54	13.20	15.23	290	560
	490.804	●	●			CE				3.70	3.70	5.74	7.58	10.00	11.76	14.43	16.51	19.04	290	570
	490.844	●	●				CG			4.05	4.05	7.18	9.47	12.50	14.70	18.03	20.63	23.80	290	570
	490.884	●	●				CG			4.65	4.65	9.19	12.13	16.00	18.82	23.08	26.41	30.46	300	580
	490.924	●	●					AK		5.20	5.20	11.49	15.16	20.00	23.52	28.85	33.01	38.07	300	590
	490.964	●	●					AK		5.80	5.80	14.36	18.95	25.00	29.40	36.07	41.26	47.59	300	590
	491.044	●	●						AM	7.25	7.25	22.97	30.31	40.00	47.04	57.71	66.02	76.15	300	600
491.084	●	●						AM	8.15	8.15	28.72	37.89	50.00	58.80	72.13	82.53	95.18	300	600	
90°	490.406	●	●	CA						1.20	1.20	0.57	0.76	1.00	1.18	1.44	1.65	1.90	490	880
	490.446		●	CA						1.30	1.30	0.72	0.95	1.25	1.47	1.80	2.06	2.38	490	900
	490.486	●	●	CA						1.45	1.45	0.92	1.21	1.60	1.88	2.31	2.64	3.05	500	900
	490.526	●	●	CA						1.70	1.55	1.15	1.52	2.00	2.35	2.89	3.30	3.81	500	910
	490.566	●	●	CA						1.90	1.90	1.44	1.89	2.50	2.94	3.61	4.13	4.76	510	920
	490.606	●	●	CA		CE				2.10	2.05	1.81	2.39	3.15	3.70	4.54	5.20	6.00	510	930
	490.646	●	●		CC	CE				2.40	2.40	2.30	3.03	4.00	4.70	5.77	6.60	7.61	520	950
	490.686	●	●		CC	CE				2.70	2.70	2.87	3.79	5.00	5.88	7.21	8.25	9.52	520	960
	490.726	●	●		CC	CE				3.20	2.80	3.62	4.77	6.30	7.41	9.09	10.40	11.99	530	970
	490.746	●	●			CE				3.15	3.15	4.08	5.38	7.10	8.35	10.24	11.72	13.52	530	980
	490.766	●	●			CE				3.40	3.40	4.59	6.06	8.00	9.41	11.54	13.20	15.23	540	980
	490.806	●	●			CE				3.90	3.90	5.74	7.58	10.00	11.76	14.43	16.51	19.04	550	990
	490.846	●	●			CE				4.65	4.00	7.18	9.47	12.50	14.70	18.03	20.63	23.80	550	1,000
	490.886	●	●				CG			5.45	4.50	9.19	12.13	16.00	18.82	23.08	26.41	30.46	550	1,010
	490.926	●	●				CG			5.90	4.50	11.49	15.16	20.00	23.52	28.85	33.01	38.07	560	1,010
	490.966	●	●				CG	AK		6.55	4.85	14.36	18.95	25.00	29.40	36.07	41.26	47.59	560	1,020
	491.006	●	●					AK		7.55	5.50	18.09	23.87	31.50	37.05	45.45	51.99	59.97	560	1,030
	491.046	●	●					AK		8.60	6.60	22.97	30.31	40.00	47.04	57.71	66.02	76.15	560	1,040
	491.086	●	●						AM	9.45	7.25	28.72	37.89	50.00	58.80	72.13	82.53	95.18	560	1,040
	491.126	●	●						AM	10.40	8.00	36.18	47.75	63.00	74.09	90.89	103.98	119.93	560	1,040
491.146	●							AM	11.00	7.50	40.78	53.81	71.00	83.50	102.43	117.19	135.16	560	1,040	
120°	490.368	●	●	CA						0.85	0.65	0.36	0.48	0.63	0.74	0.91	1.04	1.20	700	1,240
	490.408	●	●	CA						1.20	1.20	0.57	0.76	1.00	1.18	1.44	1.65	1.90	720	1,260
	490.448	●	●	CA						1.30	1.30	0.72	0.95	1.25	1.47	1.80	2.06	2.38	740	1,280
	490.488	●	●	CA						1.45	1.45	0.92	1.21	1.60	1.88	2.31	2.64	3.05	760	1,300
	490.528	●	●	CA						1.70	1.70	1.15	1.52	2.00	2.35	2.89	3.30	3.81	780	1,320
	490.568	●	●	CA						1.90	1.90	1.44	1.89	2.50	2.94	3.61	4.13	4.76	800	1,340





Spray angle	Ordering no.									Bore diameter B [mm]	Narrowest free cross sections Ø [mm]	V̇ water [l/min]							Spray diameter D [mm] (at p = 2 bar)	
	Type	Mat. no.		Code								p [bar]							H = 250 [mm]	H = 500 [mm]
		1Y	30	1/8 BSPT	1/4 BSPT	3/8 BSPT	1/2 BSPT	3/4 BSPP	1 BSPP			0.5	1.0	2.0	3.0	5.0	7.0	10.0		
		Stainless steel 316L	Brass																	
120°	490.608	●	●	CA						2.10	2.05	1.81	2.39	3.15	3.70	4.54	5.20	6.00	820	1,370
	490.648	●	●		CC	CE				2.40	2.40	2.30	3.03	4.00	4.70	5.77	6.60	7.61	840	1,400
	490.688	●	●		CC	CE				2.75	2.75	2.87	3.79	5.00	5.88	7.21	8.25	9.52	850	1,430
	490.728	●	●		CC	CE				3.20	2.80	3.62	4.77	6.30	7.41	9.09	10.40	11.99	860	1,470
	490.748	●	●			CE				3.20	3.20	4.08	5.38	7.10	8.35	10.24	11.72	13.52	870	1,500
	490.768	●	●			CE				3.45	3.45	4.59	6.06	8.00	9.41	11.54	13.20	15.23	880	1,530
	490.808	●	●			CE				3.90	3.90	5.74	7.58	10.00	11.76	14.43	16.51	19.04	900	1,580
	490.848	●	●			CE				4.70	4.00	7.18	9.47	12.50	14.70	18.03	20.63	23.80	910	1,630
	490.888	●	●				CG			5.10	4.50	9.19	12.13	16.00	18.82	23.08	26.41	30.46	920	1,680
	490.928	●	●				CG	AK		5.80	4.75	11.49	15.16	20.00	23.52	28.85	33.01	38.07	930	1,700
	490.968	●	●				CG	AK		6.65	4.85	14.36	18.95	25.00	29.40	36.07	41.26	47.59	930	1,710
	491.048	●	●					AK		9.10	5.85	22.97	30.31	40.00	47.04	57.71	66.02	76.15	930	1,730
	491.128	●	●						AM	10.80	7.75	36.18	47.75	63.00	74.09	90.89	103.98	119.93	930	1,740
	491.148	●							AM	11.40	7.65	40.78	53.81	71.00	83.50	102.43	117.19	135.16	930	1,750

Conversion formula for this series: $\dot{V}_2 = \dot{V}_1 \cdot \left(\frac{p_2}{p_1}\right)^{0.4}$
 (≤ 10 bar)

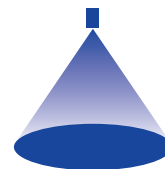
Ordering Type + Material no. + Code = Ordering no.
 example: 490.608 + 1Y + CA = 490.608.1Y.CA



Assembly accessories can be found in Chapter 9 "Accessories".

➤ Axiální trysky s rozstříkem plného kužele

Series 460/461



Features:

- Extremely uniform liquid distribution

Applications:

- Cleaning and washing processes
- Cooling
- Surface spraying
- Chemical process engineering



Series 460/461

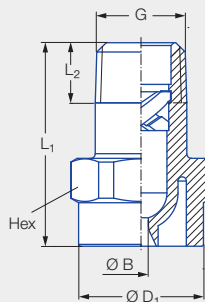


Figure 1

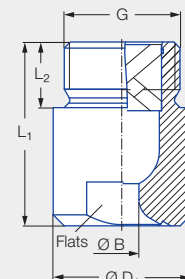


Figure 2

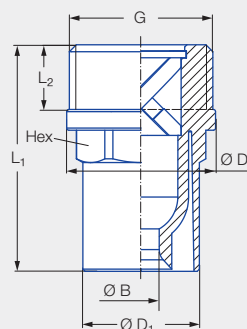




Figure 3

Code	Figure	G	Dimensions [mm]					Weight [g]
			L ₁	L ₂	Ø D ₁	Ø D ₂	Hex/Flats	
CA	1	1/8 BSPT	22.0	6.5	13.0	–	14	2.7
CC	1	1/4 BSPT	22.0	9.7	13.0	–	14	3.3
CE	1	3/8 BSPT	30.0	10.0	17.0	–	17	6.4
CG	1	1/2 BSPT	43.5	13.2	22.0	–	22	14.5
CK	2	3/4 BSPT	42.0	15.0	31.5	–	27	19.9
AK	2	3/4 BSPP	42.0	15.0	31.5	–	27	24.3
AM	3	1 BSPP	52.5	15.0	27.0	34.5	27	34.4

Spray angle	Ordering no.									Bore diameter B [mm]	Narrowest free cross sections Ø [mm]	V̇ water [l/min]						Spray diameter D [mm] (at p = 2 bar)		
	Type	Mat. no.	Code									p [bar]								
			5E	1/8 BSPT	1/4 BSPT	3/8 BSPT	1/2 BSPT	3/4 BSPT	3/4 BSPP			1 BSPP								
													PVDF	0.5	1.0	2.0	3.0	5.0	7.0	10.0
60°	460.524	●	CA							1.60	1.60	1.15	1.52	2.00	2.35	2.89	3.30	3.81	210	380
	460.644	●	CC							2.40	1.90	2.30	3.03	4.00	4.70	5.77	6.60	7.61	240	420
	460.724	●	CC							2.80	2.10	3.15	4.45	6.30	7.72	8.91	9.96	14.09	260	450
	460.964	●						AK		5.80	4.90	14.36	18.95	25.00	29.40	36.07	41.26	47.59	310	560





Spray angle	Ordering no.								Bore diameter B [mm]	Narrowest free cross sections Ø [mm]	V̇ water [l/min]						Spray diameter D [mm] (at p = 2 bar)				
	Type	Mat. no.	Code								p [bar]										
		5E	1/8 BSPT	1/4 BSPT	3/8 BSPT	1/2 BSPT	3/4 BSPT	3/4 BSPP			1 BSPP	0.5	1.0	2.0	3.0	5.0		7.0	10.0	H = 250 [mm]	H = 500 [mm]
		PVDF																			
90°	460.326	●	CA							0.80	0.55	0.23	0.30	0.40	0.47	0.58	0.66	0.76	430	750	
	460.406	●	CA							1.20	0.85	0.57	0.76	1.00	1.18	1.44	1.65	1.90	440	780	
	460.486	●	CA							1.45	1.20	0.92	1.21	1.60	1.88	2.31	2.64	3.05	450	800	
	460.526	●	CA							1.65	1.30	1.15	1.52	2.00	2.35	2.89	3.30	3.81	450	820	
	460.606	●	CA		CE					2.05	1.45	1.81	2.39	3.15	3.70	4.54	5.20	6.00	470	850	
	460.646	●		CC						2.30	1.80	2.30	3.03	4.00	4.70	5.77	6.60	7.61	480	870	
	460.726	●			CE					2.95	2.00	3.62	4.77	6.30	7.41	9.09	10.40	11.99	500	900	
	460.746	●			CE					3.30	1.90	4.08	5.38	7.10	8.35	10.24	11.72	13.52	510	910	
	460.766	●			CE					3.30	2.40	4.59	6.06	8.00	9.41	11.54	13.20	15.23	510	910	
	460.806	●			CE					3.70	2.70	5.74	7.58	10.00	11.76	14.43	16.51	19.04	520	920	
	460.846	●			CE					4.05	3.20	7.18	9.47	12.50	14.70	18.03	20.63	23.80	520	930	
	460.886	●			CE	CG				4.70	3.10	9.19	12.13	16.00	18.82	23.08	26.41	30.46	520	930	
	460.926	●				CG				5.10	2.80	11.49	15.16	20.00	23.52	28.85	33.01	38.07	520	940	
	460.966	●				CG				5.80	3.80	14.36	18.95	25.00	29.40	36.07	41.26	47.59	520	940	
	461.006	●				CG				6.40	3.80	18.09	23.87	31.50	37.05	45.45	51.99	59.97	520	940	
461.046	●					CK			7.20	5.30	22.97	30.31	40.00	47.04	57.71	66.02	76.15	520	950		
461.086	●						AM		8.40	5.00	25.00	35.36	50.00	61.24	70.71	79.06	111.80	530	950		
120°	460.368	●	CA							0.95	0.65	0.32	0.45	0.63	0.77	0.89	1.00	1.41	650	1,030	
	460.408	●	CA							1.20	0.85	0.57	0.76	1.00	1.18	1.44	1.65	1.90	680	1,100	
	460.488	●	CA							1.50	1.00	0.92	1.21	1.60	1.88	2.31	2.64	3.05	700	1,160	
	460.528	●	CA							1.65	1.20	1.15	1.52	2.00	2.35	2.89	3.30	3.81	710	1,200	
	460.608	●	CA							2.10	1.40	1.81	2.39	3.15	3.70	4.54	5.20	6.00	730	1,270	
	460.648	●		CC						2.45	1.60	2.30	3.03	4.00	4.70	5.77	6.60	7.61	750	1,310	
	460.728	●			CE					3.10	1.90	3.62	4.77	6.30	7.41	9.09	10.40	11.99	780	1,380	
	460.748	●			CE					3.30	1.90	4.08	5.38	7.10	8.35	10.24	11.72	13.52	790	1,400	
	460.768	●			CE					3.50	1.90	4.59	6.06	8.00	9.41	11.54	13.20	15.23	790	1,410	
	460.808	●			CE					3.80	2.40	5.74	7.58	10.00	11.76	14.43	16.51	19.04	810	1,430	
	460.848	●			CE					4.20	2.70	7.18	9.47	12.50	14.70	18.03	20.63	23.80	820	1,450	
	460.888	●				CG				4.60	3.10	9.19	12.13	16.00	18.82	23.08	26.41	30.46	830	1,470	
	460.968	●				CG				5.90	4.10	14.36	18.95	25.00	29.40	36.07	41.26	47.59	850	1,500	
	461.048	● ¹					CK			7.60	4.90	22.97	30.31	40.00	47.04	57.71	66.02	76.15	870	1,530	

¹ Material PP (mat. no. 53).

Conversion formula for this series: $\dot{V}_2 = \dot{V}_1 \cdot \left(\frac{p_2}{p_1}\right)^{0.4}$
(≤ 10 bar)

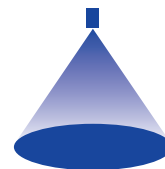
Ordering Type + Material no. + Code = Ordering no.
example: 460.326 + 5E + CA = 460.326.5E.CA



Assembly accessories can be found in Chapter 9 "Accessories".

➤ Axiální trysky s rozstříkem plného kužele

Series 405

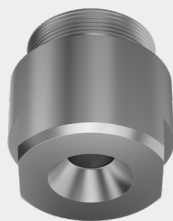


Features:

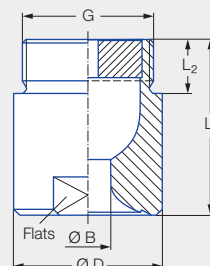
- Extremely uniform liquid distribution

Applications:

- Surface spraying
- Chemical process engineering
- Cleaning and washing processes
- Water treatment



Series 405




Code	G	Dimensions [mm]				Weight [kg] (brass)
		L ₁	L ₂	Ø D	Flats	
AP	1 1/4 BSPP	50.0	19.0	49.0	41	0.5
AR	1 1/2 BSPP	60.0	19.0	59.0	50	0.9
AV	2 BSPP	78.0	24.0	68.0	60	1.6

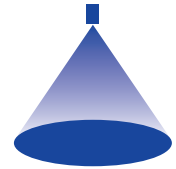
Spray angle	Ordering no.						Bore diameter B [mm]	Narrowest free cross sections Ø [mm]	V̇ water [l/min]						Spray diameter D [mm] (at p = 2 bar)	
	Type	Mat. no.		Code					p [bar]						H = 500 [mm]	H = 1,000 [mm]
		1Y	30	1 1/4 BSPP	1 1/2 BSPP	2 BSPP			0.3	0.5	1.0	2.0	3.0	5.0		
		Stainless steel 316L	Brass													
60°	405.204	●	●	AP			11.2	5.8	47	57	76	100	118	144	600	1,140
	405.284	●	●		AR		14.3	7.0	75	92	121	160	188	231	630	1,210
	405.324	●	●			AV	16.4	7.5	94	115	152	200	235	289	650	1,250
	405.364	●	●			AV	18.4	8.5	117	144	189	250	294	361	650	1,250
	405.404	●	●			AV	20.0	7.0	147	181	239	315	370	454	650	1,250
90°	405.206	●	●	AP			12.0	5.0	47	57	76	100	118	144	1,120	2,100
	405.286	●	●		AR		15.2	6.2	75	92	121	160	188	231	1,120	2,100
	405.326	●	●			AV	17.2	7.7	94	115	152	200	235	289	1,120	2,100
	405.366	●	●			AV	19.5	8.7	117	144	189	250	294	361	1,120	2,100
	405.406	●	●			AV	22.0	9.5	147	181	239	315	370	454	1,120	2,100
120°	405.208	●	●	AP			12.7	5.0	47	57	76	100	118	144	1,850	3,050
	405.288	●	●		AR		16.0	6.6	75	92	121	160	188	231	1,900	3,150
	405.328	●	●			AV	17.8	7.9	94	115	152	200	235	289	1,900	3,200
	405.368	●	●			AV	20.1	8.8	117	144	189	250	294	361	1,900	3,200
	405.408	●	●			AV	22.4	9.1	147	181	239	315	370	454	1,900	3,200

Conversion formula for this series: $\dot{V}_2 = \dot{V}_1 \cdot \left(\frac{p_2}{p_1}\right)^{0.4}$
(≤ 10 bar)

Ordering Type + Material no. + Code = Ordering no.
example: 405.204 + 1Y + AP = 405.204.1Y.AP

 Assembly accessories can be found in Chapter 9 "Accessories".

➤ Axiální trysky s rozstříkem plného kužele Series 403

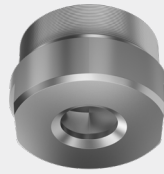


Features:

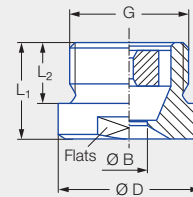
- Extremely uniform liquid distribution

Applications:

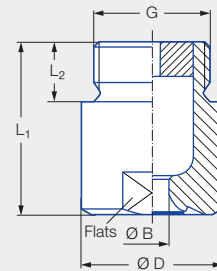
- Surface spraying
- Spraying over packings
- Chemical process engineering
- Cleaning and washing processes
- Cooling



Series 403



90° version




120° version

90° version

Type	G	Dimensions [mm]				Weight [kg]
		L ₁	L ₂	Ø D	Flats	
403.446/403.486	2 1/2 BSPP	52.0	27.0	83.0	75	1.3
403.526	3 BSPP	60.0	30.0	98.0	85	2.0
403.606	3 1/2 BSPP	70.0	32.0	118.0	105	3.6


120° version

Type	G	Dimensions [mm]				Weight [kg]
		L ₁	L ₂	Ø D	Flats	
403.448/403.488	2 1/2 BSPP	124.0	27.0	83.0	75	3.2
403.528	3 BSPP	153.0	30.0	98.0	85	5.4
403.608	3 1/2 BSPP	156.0	32.0	118.0	105	8.3
403.628	4 BSPP	165.0	36.0	128.0	110	9.6

Spray angle	Ordering no.		Bore diameter B [mm]	Narrowest free cross sections Ø [mm]	V̇ water [l/min]							Spray diameter D [mm] (at p = 2 bar)	
	Type	Mat. no.			p [bar]							 H = 500 [mm] H = 1,000 [mm]	
		1Y			0.3	0.5	1.0	2.0	3.0	5.0	7.0		
90°	403.446	●	25.0	12.0	187	230	303	400	470	577	660	1,000	1,780
	403.486	●	29.5	12.0	234	287	379	500	588	721	825	1,000	1,780
	403.526	●	32.0	13.8	295	362	477	630	741	909	1,040	1,000	1,780
	403.606	●	40.0	15.0	468	574	758	1,000	1,176	1,443	1,651	1,000	1,780
120°	403.448	●	25.5	10.0	187	230	303	400	470	577	660	1,700	2,930
	403.488	●	29.5	11.0	234	287	379	500	588	721	825	1,700	2,930
	403.528	●	32.0	15.0	295	362	477	630	741	909	1,040	1,700	2,930
	403.608	●	42.0	12.0	468	574	758	1,000	1,176	1,443	1,651	1,700	2,930
	403.628	●	45.0	15.0	585	718	947	1,250	1,470	1,803	2,063	1,700	2,930

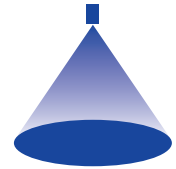
Conversion formula for this series: $\dot{V}_2 = \dot{V}_1 \cdot \left(\frac{p_2}{p_1}\right)^{0.4}$
(≤ 10 bar)

Ordering Type + Material no. = Ordering no.
example: 403.446 + 1Y = 403.446.1Y

 Assembly accessories can be found in Chapter 9 "Accessories".

➤ Axiální trysky s rozstříkem plného kužele

Series 419 FreeFlow



Features:

- Non clogging due to very large free cross sections
- Very stable spray angle
- Uniform liquid distribution

Applications:

- Cleaning and washing processes
- Dust control
- Absorption
- Distillation

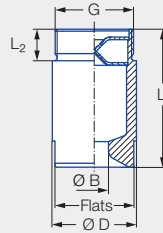


Figure 1

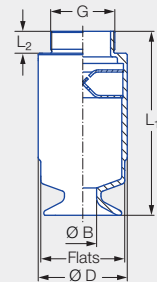


Figure 2

Series 419

Type	Code	Figure	G	Dimensions [mm]				Weight [kg]
				L ₁	L ₂	Ø D	Flats	
419.3xx	AV	1	2 BSPP	105.0	24.0	64.0	60	1.2
419.4xx	AV	2	2 BSPP	163.0	24.0	80.0	75	2.0
419.51x	AV	2	2 BSPP	199.0	24.0	102.0	95	3.7
419.51x	AY	2	2 1/2 BSPP	202.0	27.0	102.0	95	3.8
419.54x	AY	2	2 1/2 BSPP	202.0	27.0	102.0	95	3.8
419.57x	AY	2	2 1/2 BSPP	231.0	27.0	115.0	105	5.2
419.57x	LA	2	3 BSPP	233.0	30.0	115.0	105	5.2
419.6xx	LA	2	3 BSPP	252.0	30.0	122.0	115	5.4

Spray angle ¹	Ordering no.					Bore diameter B [mm]	Narrowest free cross sections Ø [mm]	V̇ water [l/min]					Spray diameter D [mm] (at p = 1 bar)	
	Type	Mat. no.	Code					p [bar]					 H = 500 [mm] H = 1,000 [mm]	
			1Y	2 BSPP	2 1/2 BSPP			3 BSPP	0.3	0.5	1.0	2.0		
													Stainless steel 316L	
90°	419.366	●	AV			19.0	17.5	117	143	189	249	360	1,200	2,200
	419.396	●	AV			21.2	17.5	140	172	227	300	432	1,200	2,200
	419.446	●	AV			24.0	20.5	187	230	303	400	577	1,200	2,200
	419.486	●	AV			29.0	20.5	234	287	379	500	721	1,200	2,200
	419.516	●	AV	AY		29.2	24.1	281	345	455	600	866	1,200	2,200
	419.546	●		AY		33.0	24.1	332	408	538	710	1,024	1,200	2,200
	419.576	●		AY	LA	35.0	27.2	398	488	644	850	1,226	1,200	2,200
	419.606	●			LA	37.5	30.1	468	574	758	1,000	1,443	1,200	2,200
	419.626	●			LA	43.0	30.1	585	718	947	1,250	1,803	1,200	2,200
120°	419.368	●	AV			21.0	17.4	117	143	189	249	360	1,660	2,900
	419.398	●	AV			24.2	17.4	140	172	227	300	432	1,660	2,900
	419.448	●	AV			24.5	20.5	187	230	303	400	577	1,660	2,900
	419.488	●	AV			29.5	20.5	234	287	379	500	721	1,660	2,900
	419.518	●	AV	AY		29.2	24.1	281	345	455	600	866	1,660	2,900
	419.548	●		AY		34.0	24.1	332	408	538	710	1,024	1,660	2,900
	419.578	●		AY	LA	35.0	28.6	398	488	644	850	1,226	1,660	2,900
	419.608	●			LA	38.0	32.2	468	574	758	1,000	1,443	1,660	2,900
	419.628	●			LA	43.5	32.2	585	718	947	1,250	1,803	1,660	2,900

¹ Spray angle at 1 bar.

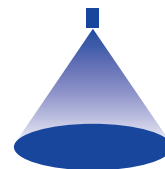
Conversion formula for this series: $\dot{V}_2 = \dot{V}_1 \cdot \left(\frac{p_2}{p_1}\right)^{0.4}$ (≤ 10 bar)

Ordering Type + Material no. + Code = Ordering no.
example: 419.366 + 1Y + AV = 419.366.1Y.AV

Assembly accessories can be found in Chapter 9 "Accessories".

➤ Axiální trysky s rozstříkem plného kužele

Series 468



Features:

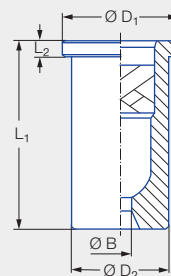
- Extremely uniform liquid distribution
- Assembly with retaining nut

Applications:

- Surface spraying
- Chemical process engineering
- Cleaning and washing processes
- Water treatment



Series 468



Code	Dimensions [mm]			Weight [g] (brass)
	L ₂	Ø D ₁	Ø D ₂	
Assembly with retaining nut 3/8 BSPP	2.00	14.80	12.65	18.00

Spray angle	Ordering no.				Bore diameter B [mm]	Narrowest free cross sections Ø [mm]	L ₁ [mm]	V̇ water [l/min]						Spray diameter D [mm] (at p = 2 bar)	
	Type	Mat. no.						p [bar]						H = 250 [mm]	H = 500 [mm]
		17 ¹	30	5E				0.5	1.0	2.0	3.0	5.0	10.0		
60°	468.604	●	●		2.05	1.40	18.00	1.81	2.39	3.15	3.70	4.54	6.00	280	560
	468.644		●	●	2.40	1.90	24.50	2.30	3.03	4.00	4.70	5.77	7.61	290	570
	468.684		●		2.60	2.00	24.50	2.87	3.79	5.00	5.88	7.21	9.52	300	580
	468.724	●	●		2.90	2.00	24.50	3.62	4.77	6.30	7.41	9.09	11.99	310	590
90°	468.526	●	●	●	1.65	1.30	18.00	1.15	1.52	2.00	2.35	2.89	3.81	460	780
	468.846	●	●		4.05	3.20	24.50	7.18	9.47	12.50	14.70	18.03	23.80	500	920
120°	468.368		●		0.95	0.70	18.00	0.36	0.48	0.63	0.74	0.91	1.20	740	1,750
	468.408	●	●		1.20	0.85	18.00	0.57	0.76	1.00	1.18	1.44	1.90	740	1,750
	468.488	●	●		1.50	1.00	18.00	0.92	1.21	1.60	1.88	2.31	3.05	740	1,750
	468.528	●	●		1.65	1.20	18.00	1.15	1.52	2.00	2.35	2.89	3.81	740	1,750

¹ We reserve the right to supply material 316Ti or 316L under material no. 17.

Conversion formula for this series: $\dot{V}_2 = \dot{V}_1 \cdot \left(\frac{p_2}{p_1}\right)^{0.4}$
(≤ 10 bar)

Ordering Type + Material no. = Ordering no.
example: 468.604 + 17 = 468.604.17



Assembly accessories can be found in Chapter 9 "Accessories".